

75-81 Emission Hose Kit

These kits includes as required...

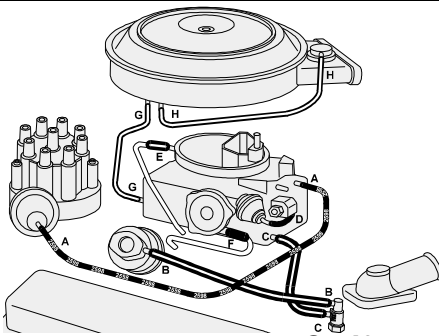
Hi Temperature Hypalon Hose
 Similar Diameters with Raised Ribs
 Similar Colored Identification Stripes
 Red, White, Blue, Yellow, Purple,
 Orange, Green, Tan, and even Pink
 Repeating Part Numbers on some Hoses
 4398, 2598, 0717, 0718, 9577, 9578
 T or Y Pipe Hose Connectors

Connects the following as required:

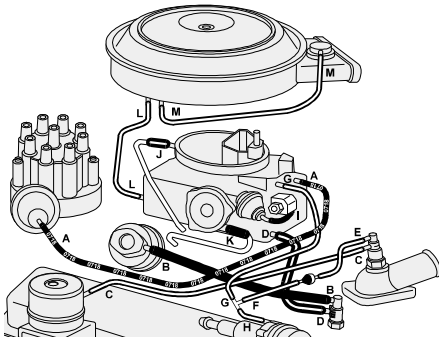
Distributor Vacuum Advance Control
 Smog Pump Divertor Valve
 EGR = Exhaust Gas Re-Circulate Valve
 EFE = Early Fuel Evaporation Actuator
 Carburetor Choke Vacuum Control
 Carb Choke & Fresh Air Pipes
 Air Cleaner Sensor & Vacuum Motor

Caveat Emptor

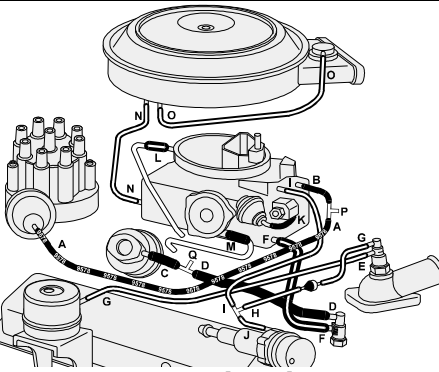
We use the GM Spec **High Temperature** Hose specified on actual GM Blueprints. Zip merely "copied" these hose kits from us when we cut him off. We used GM blueprints, but did not share any of that info with them. Avoid Zip part number that begin with a Z.



76 L-48 except Calif.



77 L-82 & L-48 Calif or Hi-Altitude

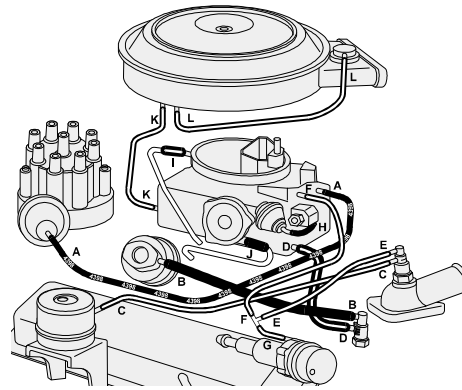


78 L-48 Hi-Altitude

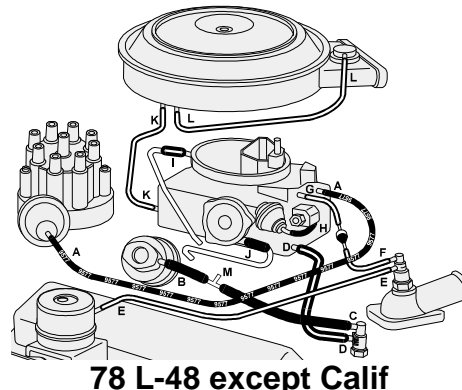
Key: NB2 = California; NA6 = High Altitude
 W = White; B = Black; T = T-pipe

Add a Full Color Schematic for Easy Hook-Up 1.00
 Or use your Assembly Manual for routing.

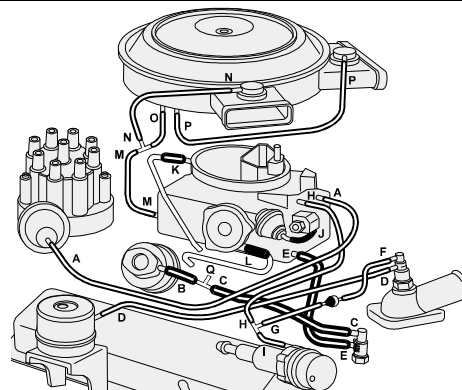
Model	Number of Hoses + T-Pipes	Part No.	Price
75 L-48 & L-82	10 hose + T	3750362	23.00
76 L-48 except Calif.	8 hoses	3750363	23.00
76 L-82 or L-48 NB2	12 hoses + T	3750364	26.00
77 L-48 except Calif.	11 hoses	3750365	24.00
77 L-82 or L-48 NB2 or NA6	13 hoses + T	3750366	27.00
78 L-48 except Calif.	12 hoses + T	3750367	25.00
78 L-48 NA6	15 hoses + 3T	3750368	33.00
78 L-82 or L-48 NB2	16 hoses + 3T	3750369	34.00
79 L-48 NA6	17 hoses + 4T	3750370	36.00
79 L-82 or L-48 NB2	16 hoses + 3T	3750371	35.00
79 L-48 except Calif.	17 hoses + 2T	3750372	34.00
80 All	21 hoses + 3T	3750373	38.00
81 Automatic	17 hoses + 3T	3750376	38.00
81 4 Speed	14 hoses + 2T	3750378	38.00



76 L-82 & L-48 Calif or Hi-Altitude

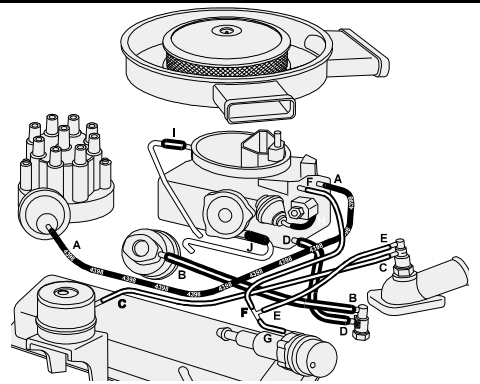


78 L-48 except Calif

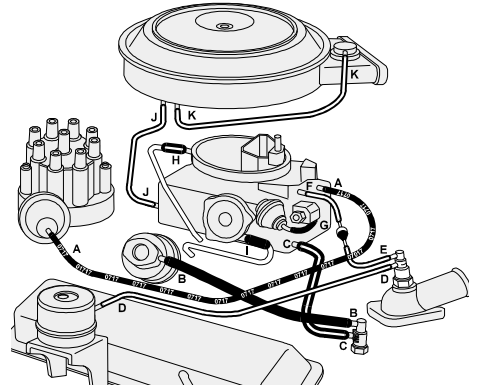


79 L-82 or L-48 Calif

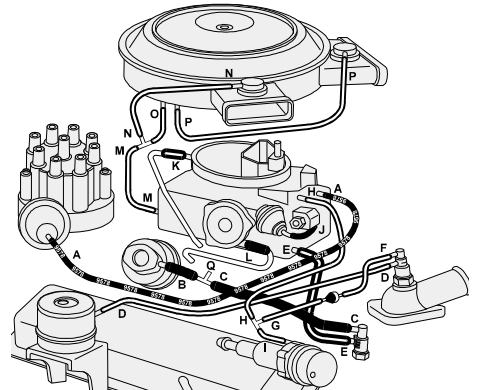
DocRebuild 87



75 L-48 and L-82



77 L-48 except Calif



78 L-82 or L-48 Calif

Shown directly below is the diagram to hook up and identify the content in any of the Blem Products Kits. No kidding. That's it. Good Luck!



Note: The diagrams supplied with these 75-81 Emission Hose Kits illustrate the relative position of the various parts that are connected. For the sake of clarity, some of these parts may be slightly shifted from their actual location to allow a clearer picture of the routing and connections. For this reason, some hoses may falsely appear to be Longer or Shorter than others in these diagrams.