

## Tach & Speedometer

**Dash Bulb Socket** 63-67 One Wire grounds through cluster. Use as required 9748156 3.75

Tach or Speedo Lens 2 reqd

**A 63 Lens**  
Authentic Acrylic Plastic  
9748130 13.95

**B 64-67 Glass Lens**  
Concave OEM  
9748132 11.00

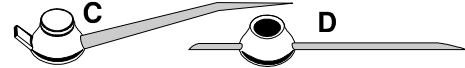
Concave **Repro**  
9748126 9.50

Tach or Speedo Pointer Needle

**C 63-64 Needle with Hub 2 reqd** 9748150 44.50

**D 65-67 Needle with Hub 2 reqd NOS** 9748151 20.00

**D 65-67 Needle with Hub 2 reqd repro** 9748146 17.50



### Speed & Tach Rebuild Kits

63-67 Tach or Speedo Face Mounting Screw a "bastard" size black plated 9748170 3.00

63-67 Tach or Speedo Mounting Cushion & Screw 4 Piece Set mounts gauge to cluster 9748172 2.95

63-67 Total Odometer with Numbers 9748112 44.50

63-67 Odometer Mounting Clip 9748108 4.00

63-64 Odometer 2nd Worm Gear 9748101 9.95

65-67 Odometer 2nd Worm Gear 9748098 30.00

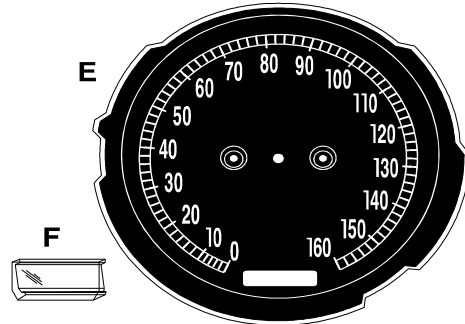
63-67 Odometer 3rd Worm Gear 9748103 17.50

**E 65-67 Speedo Face NOS** 9748202 29.95

63-67 Trip Odometer with Numbers 9748114 44.50

**F 63-67 Trip Odometer Lens** 9748129 11.20

63-67 Trip Odometer Gasket 9748113 2.50



**NOT RETURNABLE IF FACTORY SEAL BROKEN**

**65-67 Complete NOS** 65.67 NOS Tach Tach Gauge with Face Face Only

**G 5300 Redline** 9748222 169.00 9748203 29.95

**H 6000 Redline** 9748223 169.00 9748204 29.95

**I 6500 Redline** 9748224 169.00 9748205 29.95

### Small Gauge Lens & Needle

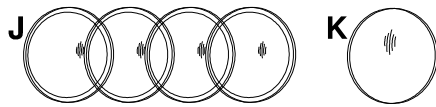
**J 63 Plastic Lens 4 Piece Set** 9748137 23.50

**K 64-67 Glass Lens 4 reqd** 9748138 6.40

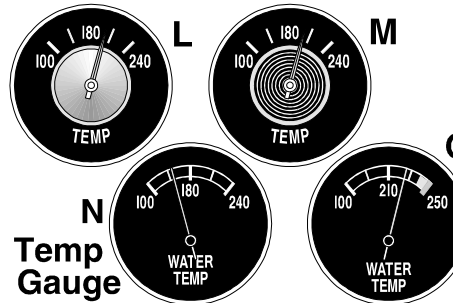
Small Gauge Pointer Needle

63-64 Small Gauge Needle 9748148 Disc

65-67 Small Gauge Needle 9748149 9.00



**Gauge Lens Sets** include Tachometer, Speedometer, Odometer, Clock & 4 Small Gauge Lenses  
63 Gauge Lens 8 Piece Set 9773109 67.25  
64-67 Gauge Lens 8 Piece Set 9773110 68.00



**NOT RETURNABLE IF FACTORY SEAL IS BROKEN**

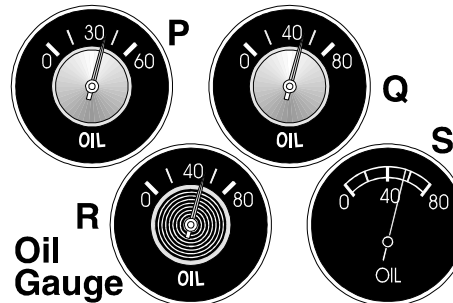
**L 63 Temp 240 deg** 1148202 83.50 1148302 75.00

**M 64 Temp 240 deg** 1148203 82.50 1148303 75.00

**N 65 Temp 240 deg** 1148204 79.50 1148304 75.00

**O 65-67 Temp 250 d** 1148205 79.50 1148305 75.00

63-67 Temp Gauge Wire Harness Connector includes pigtail Wire Leads 1148100 5.00



**NOT RETURNABLE IF FACTORY SEAL IS BROKEN**

Early 63 60 lb Oil Gauge used to VIN 16,045 approx no matter the horsepower. Post this # all models use 80 lb

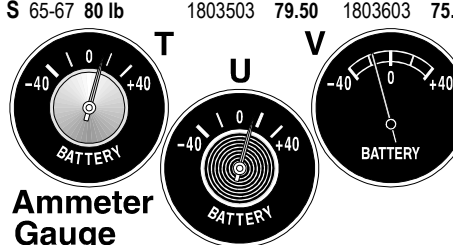
**P 63 60 lb** 1803500 82.50 1803600 75.00

**Q 63 80 lb.** 1803501 82.50 1803601 75.00

**R 64 80 lb.** 1803502 82.50 1803602 75.00

65-67 60 lb 1803504 79.50 1803604 75.00

**S 65-67 80 lb** 1803503 79.50 1803603 75.00



**Ammeter Gauge**

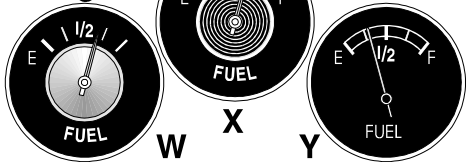
## Ammeter Gauges 137

**NOT Returnable if Factory Seal is BROKEN**

	OEM	Import
T 63 Ammeter	2515106 83.50	2515122 75.00
U 64 Ammeter	2515107 82.50	2515124 75.00
V 65-67 Ammeter	2515108 79.50	2515126 75.00

63-67 Ammeter Capacitor on back of gauge 2515104 24.00

### Fuel Gauge



### Fuel Gauges

**NOT Returnable if Factory Seal is BROKEN**

	OEM	OEM	Import
W 63 Fuel Gauge	3108205 83.50	3108216 75.00	
X 64 Fuel Gauge	3108206 87.50	3108218 75.00	
Y 65-67 Fuel	3108207 79.50	3108220 75.00	

**NEW Gauge Set** include Temp, Fuel, Ammeter Oil. OEM re-issue, made in the USA. When it costs \$800-1000 to restore a cluster. This is an attractive alternative. Get new lenses, some Krylon cluster paint and Save alot. Cheap insurance for spares & peace of mind.

63 Gauge Set **specify** 60-80 lb oil 9749120 319.00

64 Gauge Set with 80 lb oil 9749122 309.00

65 Gauge Set **specify** 60-80 lb oil 9749124 299.00

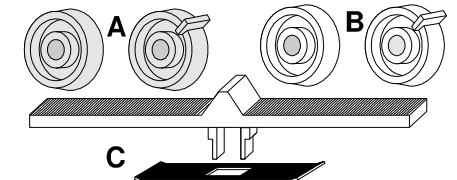
66-67 Gauge Set **specify** 60-80 lb oil 9749126 299.00

### Radio Parts

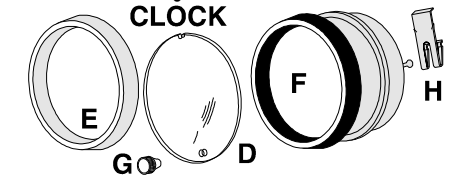
Tone Control & Dummy Spacer Knobs

**A 63-64 Satin Finish Knobs Pair** 9647310 16.45

**B 65-67 Chrome Finish Knobs Pair** 9647311 16.45



**C 63-67 AM-FM Chrome Selector Bar** includes the spring steel retainer for mounting plus installation instructions.. Slide this bar to change AM to FM. 9647357 22.00



**D 63-67 Clear Clock Lens USA** 9772203 14.50

**D 63-67 Clear Clock Lens China** 9772199 12.50

**E 63-64 Silver & Chrome Bezel USA** 9744133 64.50

**E 63-64 Silver & Chrome Bezel China** 9772112 54.95

**F 65-67 Black & Chrome Bezel USA** 9744135 64.50

**F 65-67 Clock Assembly China** 9772109 279.95

**G 63-67 Clock Chrome Knob USA** 9772108 9.75

**H 63-67 Clock Mounting Dash**

**CLIP** Pair Stamped spring

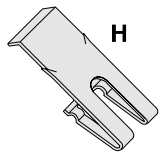
steel with a Zinc plating finish.

Slip these slotted clips over the ball

headed studs at the rear of the clock

to mount it in the center dashboard.

9772205 6.00



## 63-67 Quartz Conversion Kit

Convert your mechanical clock to an accurate quartz

clock. Includes all required parts and complete

instructions for conversion. **NOT RETURNABLE IF**

**FACTORY SEAL IS BROKEN** 9775220 78.00

