

58-62 Dash

Dash Bulb Socket 58-62 One Wire grounds through cluster. Use as required 9748156 3.75

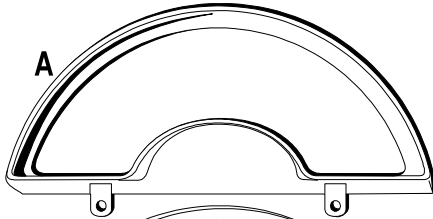
Dash Cluster Hardware

58-62 Upper To Lower Cluster 8 Piece Mounting Kit with 8 nuts & 8 lock washers. 9745105 2.95

58-62 Cluster To Dash 10 Piece Mounting Kit with 5 bolts & 5 internal star washers. 9745107 3.50

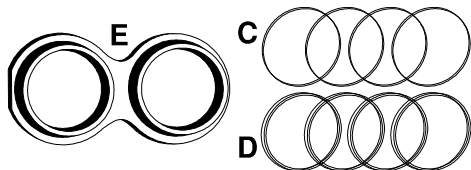
Dash Cluster Chrome Set

A+E+F 58-62 Chrome Bezel 4 Piece Set for Speedo, Tach & 2 Small Gauge. 9744100 188.50
 58-62 Dash Bezel 7 Piece Set *Import* 9744110 215.50
 58-62 Dash Bezel 7 Piece Set USA 9744111 215.00



Speedometer

A 58-62 Speedo Chrome Bezel *Import* 9744104 69.50
 58-62 Speedo Chrome Bezel USA 9744108 90.00
 B Speedometer 160 Mph Lens USA 9748115 36.00
 59-62 Speedo Needle NOS 9748116 18.25
 58-62 Speedometer Rebuild Kit kit includes a calibrated speedo head, worm gears & instructions. 9748502 Disc
 58-62 Odometer with Numbers 9748112 44.50
 58-62 Odometer Mounting Clip 9748108 4.00
 58-62 Odometer 2nd Worm Gear 9748101 9.95
 58-62 Odometer 3rd Worm Gear 9748103 17.50

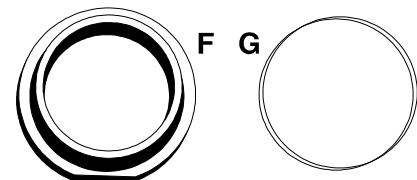


Small Gauge

C 58 Gauge Lens 4 Piece Set 9748135 17.50
 D 59-62 Gauge Lens 4 Piece Set 9748136 18.50
 E 53-62 Chrome Small Gauge Twin Bezel 2 reqd
 1 Gas & Temp & 1 Amp & Oil. *Import* 9744120 37.50
 1 Gas & Temp & 1 Amp & Oil. USA 9744110 39.50

Tachometer

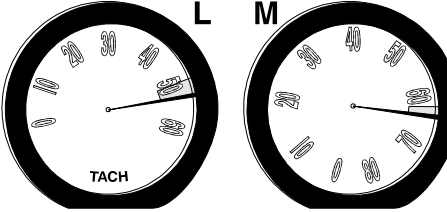
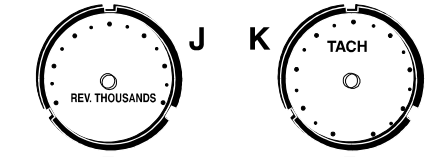
F 53-62 Tach Chrome Bezel *Import* 9744106 44.50
 53-62 Tach Chrome Bezel USA 9744109 49.00
 G 58-62 Clear Tach Lens 9748125 13.00



H 58 Tach Needle 9748118 37.50
 I 59-62 Tach Needle *Repro* 9748119 18.00
 I 59-62 Tach Needle *Delco* 9748014 27.50



58 Inner Tach Lenses with Dots
 J 58 Tach Lens with Dots 9748124 24.50
 K 58 8000 RPM Tach Lens with Dots 9748181 31.00



58 Inner Tach Lenses with Numbers
 L 58 Tach Lens 6000 RPM 9748122 39.00
 M 58 Tach Lens 8000 RPM 9748180 38.00

Tachometer Rebuild Kit

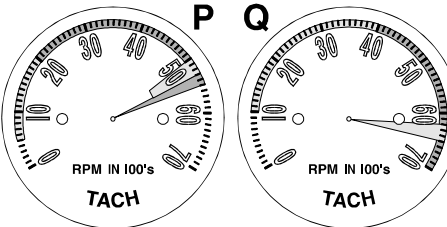
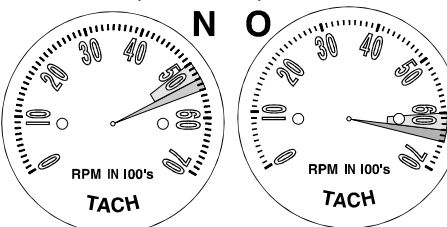
Kits includes a calibrated head assembly with detailed instruction for an accurate rebuild of the mechanism.

Specify Redline, Generator or Distributor Drive.

Model	Redline	Tach drive by...	Price
58	5500 RPM	Generator	9748506 Disc
58	6500 RPM	Generator	9748506 Disc
58	6500 RPM	Distributor	9748507 100.00
59-61	5500+6500 RPM	Generator	9748508 Disc
59-61	5500+6500 RPM	Distributor or	
62	5500+6500 RPM	Distributor	9748509 Disc

59-62 Tachometer Faces

Faces have silk-screened logos, authentic color coded power bands & redlines. These are Steel faces - not Decals, not overlays, nor bull-on-ey.



Model	Redline	Horsepower	Price
N	59	5500 RPM 230, 245, 250 HP	9748001 51.75
O	59	6500 RPM 270, 290 HP	9748002 51.75
		Early 60 5500 RPM 230, 245, 275 HP	9748003 51.75
		Early 60 6500 RPM 270 HP	9748004 51.75

Early 60 has White numbers, Late 60 has Green numbers
 P Late 60-61 5500 RPM 230, 245, 275 HP 9748005 51.75
 Q Late 60-61 6500 RPM 315 HP 9748006 51.75
 Late 61-62 5500 RPM 250, 300 HP 9748007 51.75
 Late 61-62 6500 RPM 340, 360 HP 9748008 51.75
 58-67 Tach or Speedo Face Mounting Screw
 Bastard size plated Black 9748170 3.00

59-62 Tachometer Gauge

Heads includes silk-screened face, needle pointer and calibrated head assembly less case, lens or bezel.

Tach Gauges Are NOT RETURNABLE

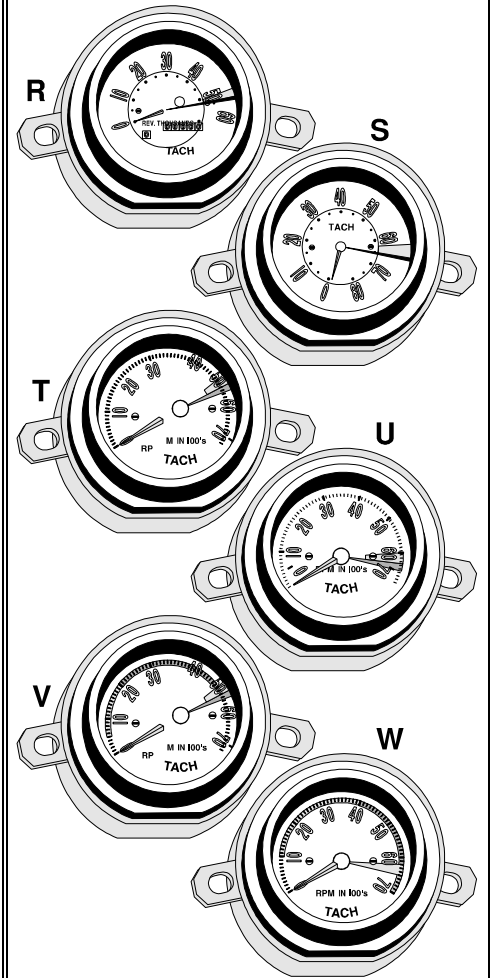
Model	Redline	Horsepower	Price
59	5500 RPM	230, 245, 250 HP	9748701 130.00
59	6500 RPM	270, 290 HP	9748702 130.00
60	5500 RPM	230, 245, 275 HP	9748703 130.00
60	6500 RPM	270 HP	9748704 130.00
61	5500 RPM	230, 245, 275 HP	9748705 130.00
61	6500 RPM	315 HP	9748706 130.00
62	5500 RPM	250, 300 HP	9748707 130.00
62	6500 RPM	340, 360 HP	9748708 0.00

58-62 Complete Tachometer

Include silk-screened face, inner & outer lenses, needle pointer, chrome trim bezel, calibrated head assembly and case. Ready to install!

NOT RETURNABLE if Factory Seal Broken

Model	Redline	Horsepower	Price
R	58	5500 RPM 230 HP	9748803 297.50
S	58	6500 RPM 245, 270 HP	9748804 297.50
S	58	6500 RPM 250, 290 HP	9748805 297.50
T	59	5500 RPM 230 HP	9748806 345.00
U	59	6500 RPM 245, 270 HP	9748807 345.00
U	59	6500 RPM 250, 290 HP	9748809 345.00



NOT RETURNABLE if Factory Seal Broken

Model	Redline	Horsepower	Price
Early 60	5500 RPM	230 HP	9748810 345.00
Early 60	6500 RPM	245, 270 HP	9748811 345.00
Early 60	6500 RPM	275, 315 HP	9748812 345.00
Early 60 has White numbers, Late 60 has Green numbers			
V	Late 60-61	5500 RPM 230 HP	9748813 345.00
W	Late 60-61	6500 RPM 245, 270 HP	9748814 345.00
W	Late 60-61	6500 RPM 275, 315 HP	9748815 345.00
	62	5500 RPM 250, 300 HP	9748816 345.00
	62	6500 RPM 340, 360 HP	9748817 345.00